

APPENDIX – 6-1

Sound Power Levels of PME's

Sound Power Levels of PME's (Unmitigated Scenario)

Equipment	TM Identification	SWL
Air Compressor	CNP 002	102
Asphalt Paver	CNP 004	109
Auger	CNP 167	114
Bentonite filtering and mixing plant	CNP 162	105
Breaker handheld	CNP 024	108
Chisel	CNP 164	115
Circular Saw	CNP 201	108
Concrete Lorry Mixer	CNP 044	109
Concrete Pump Truck	BS Table C6 REF 36	106
Conveyor belt	CNP 041	90
Crane Lorry	CNP 048	112
Crawler Crane	CNP 048	112
Crawler Drill	CNP 182	123
Derrick barge	CNP 061	104
Down the Hole Rig (Electric)	BS Table C4 REF 44	109
Drill Hole Machine (Electric)	CNP 166	100
Dump Truck	BS5228 C9 REF 24	104
Electric Grout Pump	CNP 106	105
Excavator	CNP 081	112
Filtering Plant / Desander	CNP 162	105
Grout Mixer (Electric)	CNP 105	90
Hydraulic Breaker	CNP 028	122
Hydraulic Excavator	CNP 081	112
Lorry	CNP 141	112
Mini Excavator	BS Table C3 REF 108	97
Mobile Crane	CNP 048	112
Piling, Crawler crane/chisel/oscillator/RCD	CNP 164	115
Pipe Pile Rigs	CNP 167	114
Pokers	CNP 170	113
Roller	CNP 186	108
Ventilation Fan	CNP 241	108
Water Pump	CNP 282	103
Gantry	CNP 049	95

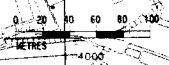
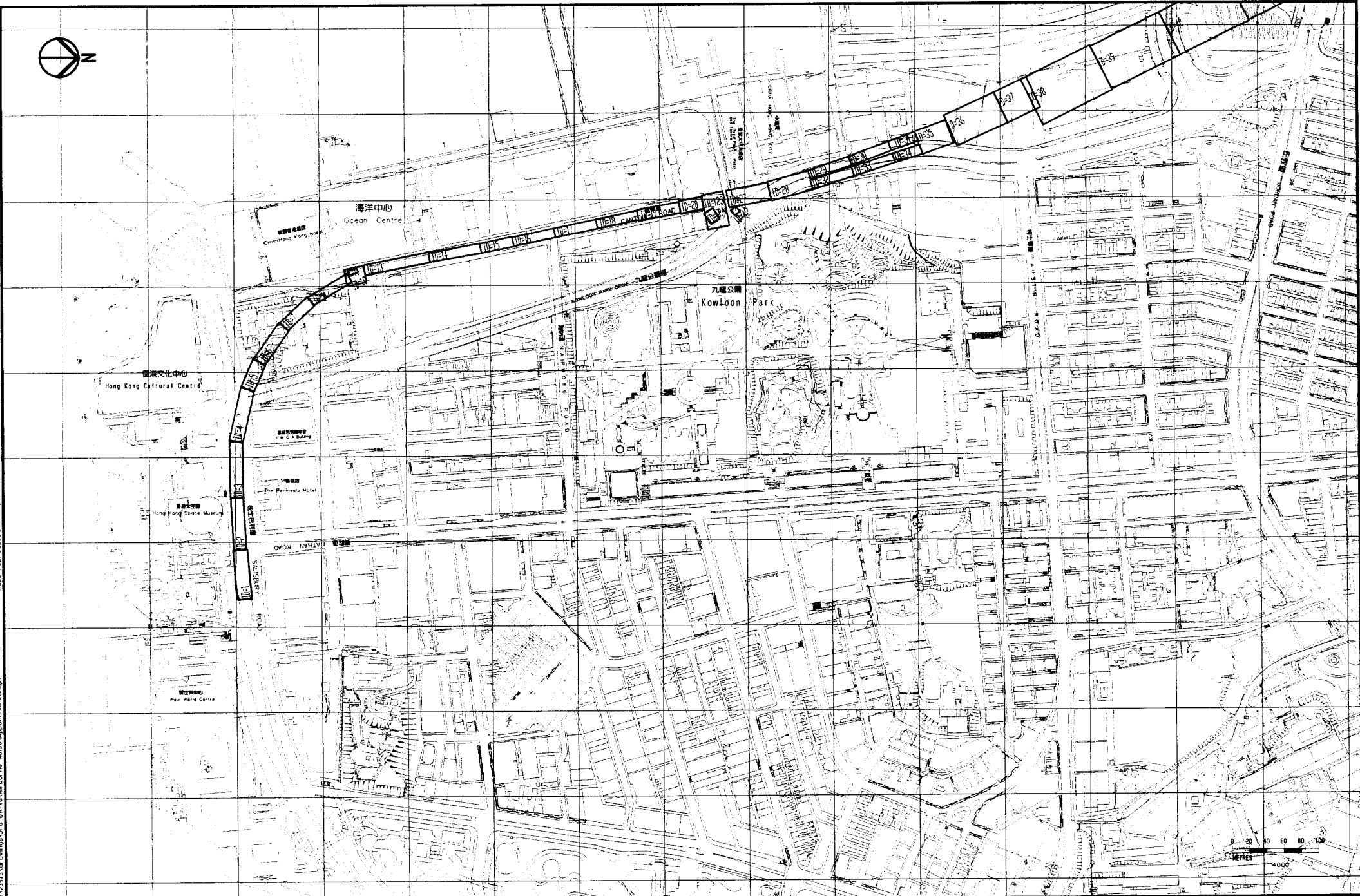
APPENDIX – 6-2

Locations of Notional Sources and Distance to NSRs



Maps reproduced with permission of the Director of Lands, (C) Hong Kong Government.

FILENAME: G:\mva\project\2351\dwg\method\y.dwg EIA-WA\Informa\Notes\AppendixE-2a.dwg



REV	DATE	BY	SUB	APP	DESCRIPTION

REV	DATE	BY	SUB	APP	DESCRIPTION

DESIGNED BY SW
 DRAWN BY RL
 CHECKED BY FC
 IN CHARGE ST
 DATE 5 DEC 2003

New Railway Projects

新鐵路策劃

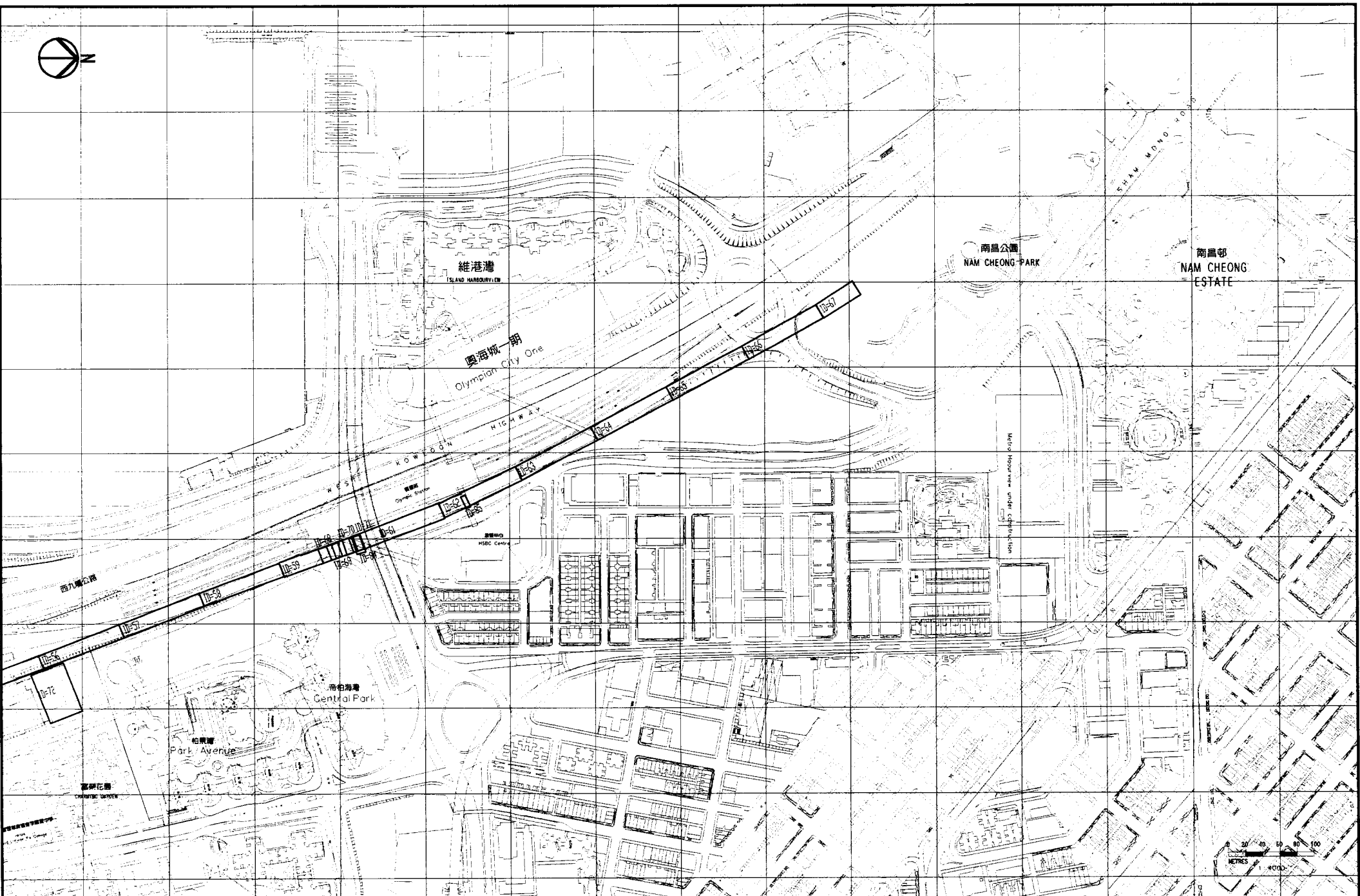
Ove Arup & Partners Hong Kong Limited

KOWLOON SOUTHERN LINK KSL GSA-5100
EIA & ASSOCIATED SERVICES

LOCATIONS OF NOTIONAL SOURCES

DRAWN PERSON	CARD DATE
SCALE	5 DEC 2003
DRAWING NUMBER	1 : 4000 @ A3
APPENDIX 6-2	
SHEET NO	STAGE CODE REV
1 of 3	P E

G:\env\p\0\sect\232\3\kcr\ongka\3rd EIA\MAP\Borneo\Notes\AppendixE-2.dgn
 Maps reproduced with permission of The Director of Lands. (C) Hong Kong Government.



REV	DATE	BY	SUB	APP	DESCRIPTION

REV	DATE	BY	SUB	APP	DESCRIPTION
▲	DEC2003	SW	FC	ST	EIA REPORT
▲	NOV2003	SW	FC	ST	EIA REPORT
▲	30MAY2003	SW	FC	ST	EIA REPORT
▲	7MAR2003	SW	FC	ST	EIA REPORT (2ND DRAFT)
▲	11OCT2002	SW	FC	ST	EIA REPORT (1ST DRAFT)

DESIGNED BY	SW
DRAWN BY	RL
CHECKED BY	FC
IN CHARGE	ST
DATE	5 DEC 2003


New Railway Projects
新鐵路策劃
 Ove Arup & Partners Hong Kong Limited **ARUP**

KOWLOON SOUTHERN LINK KSL GSA-5100
EIA & ASSOCIATED SERVICES
LOCATIONS OF NOTIONAL SOURCES
 DRAWING NUMBER: **APPENDIX E-2**
 SHEET NO: **3 of 3** STAGE CODE: **P** REV: **E**
 SCALE: 1 : 4000 @ A3
 500 FEET SCALE: 1 : 1200 @ A3
 DATE: 5 DEC 2003

Distance between Notional Source Positions and NSRs (Slant Distance)

NSR No. WorkSite	1	2	3	6	7	8	9	10	11	12	13	14	15	16	17	18	19
1	109.2	217.5	215.7	384.0	553.6	619.3	636.2	914.1	855.3	875.9	918.2	1035.6	1496.2	1510.3	1605.6	1379.4	1564.2
2	63.5	158.3	171.4	337.9	519.2	587.8	605.3	888.1	830.5	851.7	895.9	1016.4	1454.6	1479.3	1576.2	1361.4	1541.9
3	35.8	93.6	129.3	287.9	482.8	554.3	572.4	859.5	803.6	825.4	871.6	995.1	1406.7	1443.5	1542.2	1340.7	1516.2
4	72.1	48.4	99.7	236.2	444.0	518.0	536.6	826.3	772.4	794.7	842.8	968.9	1352.3	1401.6	1501.9	1314.2	1484.2
5	123.8	40.1	91.7	194.2	410.0	485.3	504.2	794.6	742.5	765.1	814.4	942.2	1306.2	1362.5	1464.0	1286.6	1452.4
6	162.2	67.8	95.0	155.8	376.2	452.2	471.2	761.5	710.7	733.5	783.7	912.5	1261.1	1323.1	1425.4	1256.0	1418.5
7	209.7	111.2	110.8	113.2	336.3	412.6	431.7	721.0	671.8	694.7	745.8	875.4	1216.2	1277.1	1379.4	1217.6	1376.7
8	259.7	157.7	134.7	67.3	289.7	365.9	384.9	672.3	625.0	648.0	700.0	830.3	1168.4	1226.7	1329.2	1170.8	1325.5
10	294.2	201.1	158.5	47.0	267.4	343.6	362.6	650.5	602.5	625.5	677.4	807.6	1144.0	1204.8	1307.4	1148.3	1305.2
11	287.8	196.5	150.6	40.9	262.6	338.9	357.8	646.2	597.9	620.9	672.5	802.6	1143.1	1202.2	1304.7	1143.7	1301.4
13	333.4	244.3	183.1	14.6	197.4	273.4	292.3	580.3	532.2	555.2	607.2	737.4	1099.4	1147.3	1248.4	1078.0	1235.3
14	383.1	300.5	224.1	57.8	144.6	220.4	239.2	527.2	479.0	502.0	554.1	684.3	1053.6	1092.4	1192.9	1024.8	1182.7
15	432.0	354.8	269.2	116.3	90.0	165.3	183.9	472.0	423.6	446.6	498.9	629.0	1010.9	1039.1	1138.7	969.4	1127.9
16	471.9	395.4	307.3	157.8	45.0	118.4	136.7	424.8	376.3	399.3	451.7	581.8	978.3	998.2	1097.2	922.0	1080.9
17	517.2	444.4	351.5	207.6	20.1	69.5	87.0	374.8	326.2	349.3	401.9	532.0	942.6	952.4	1050.6	871.9	1031.3
18	563.0	493.7	396.6	257.5	41.1	29.6	38.6	325.2	276.6	299.6	352.5	482.6	908.4	907.1	1004.4	822.2	982.0
19	607.2	541.7	440.4	306.2	85.9	23.7	13.2	276.5	227.6	250.7	304.0	433.9	877.0	863.6	959.7	773.3	933.6
20	647.3	586.4	480.5	351.4	130.3	56.0	35.7	243.3	193.9	217.0	270.6	400.4	851.7	827.1	923.4	739.6	900.7
27	706.0	647.6	539.5	413.4	191.8	116.0	96.0	170.8	120.4	143.5	198.0	327.2	812.4	766.5	859.0	666.1	828.5
28	754.9	697.7	588.5	463.8	242.0	166.0	146.2	121.1	70.0	93.0	149.0	277.4	783.5	720.3	810.4	615.5	778.5
29	806.6	749.2	640.2	514.6	292.9	216.9	197.2	69.8	32.5	53.0	111.3	236.2	752.2	677.1	766.8	564.9	726.8
30	856.8	799.6	690.4	564.8	343.1	267.1	247.5	25.8	28.1	26.4	76.1	192.6	723.8	632.1	719.9	515.6	677.0
31	902.2	845.0	735.9	609.9	388.3	312.3	292.8	15.4	59.1	45.3	61.6	159.0	701.9	595.6	681.7	479.6	640.1
32	804.1	748.3	637.9	514.8	292.8	216.7	196.9	76.2	23.1	44.7	105.3	231.0	762.7	683.5	772.4	563.8	728.5
33	854.6	798.9	688.5	565.1	343.2	267.0	247.3	37.1	16.5	12.6	67.6	186.0	736.1	640.0	726.9	514.0	678.7
34	900.7	845.3	734.6	611.3	389.4	313.2	293.6	26.4	55.0	34.9	49.2	149.4	715.3	603.7	688.7	476.5	640.9
35	935.3	879.1	769.1	644.4	422.6	346.5	327.0	39.9	89.8	69.1	57.0	121.0	687.1	564.0	649.6	441.8	603.9
36	981.9	925.9	815.8	690.8	469.2	393.1	373.7	84.5	136.2	114.8	83.2	91.2	659.3	508.2	590.9	385.2	544.3
37	1041.2	984.9	875.1	749.5	528.0	452.0	432.6	142.7	195.5	174.0	137.4	88.3	635.0	466.3	547.5	340.6	496.3
38	1088.6	1032.4	922.5	796.7	575.3	499.4	480.0	189.9	242.9	221.2	181.8	96.5	615.7	411.0	485.4	267.3	424.6
39	1179.0	1122.2	1012.9	885.8	664.8	589.1	569.8	279.5	333.3	311.7	270.9	165.6	589.6	344.9	404.5	191.6	334.9
40	1267.7	1210.2	1101.4	973.3	752.7	677.1	657.9	367.6	422.0	400.4	358.9	249.7	576.6	289.3	332.0	137.7	246.0
41	1356.5	1298.5	1190.1	1061.2	840.9	765.4	746.3	456.1	510.8	489.2	447.3	335.8	576.1	249.5	270.5	116.6	158.1
46	1442.4	1383.3	1275.8	1145.4	925.7	850.4	831.3	541.5	596.9	575.5	533.8	422.3	585.5	231.5	224.2	159.5	80.3
47	1525.4	1466.1	1358.8	1228.0	1008.5	933.3	914.3	624.5	679.9	658.4	616.3	503.6	611.9	246.1	199.0	219.2	21.4
48	1623.6	1564.4	1457.0	1326.2	1106.8	1031.6	1012.5	722.7	778.0	756.4	713.8	603.9	657.1	295.9	216.8	297.0	77.0
49	1723.8	1664.9	1557.3	1426.7	1207.2	1132.0	1113.0	823.1	878.1	856.5	813.4	699.2	717.3	368.8	273.3	383.4	166.0
50	1823.2	1764.5	1656.8	1526.3	1306.9	1231.7	1212.6	922.6	977.5	955.8	912.3	795.1	785.0	450.8	348.2	472.9	265.1
51	1924.3	1865.8	1757.9	1627.6	1408.1	1332.9	1313.8	1023.8	1078.6	1056.8	1013.0	895.0	860.9	540.6	434.5	567.4	366.0
52	2024.8	1966.3	1858.4	1728.0	1508.6	1433.4	1414.3	1124.3	1179.1	1157.3	1113.3	994.9	939.1	633.2	525.1	657.9	466.5
53	2123.5	2064.8	1957.1	1826.4	1607.2	1532.0	1513.0	1223.0	1277.8	1256.0	1212.0	1093.4	1016.8	723.2	614.1	755.0	565.2
54	2223.0	2164.2	2056.6	1925.7	1706.6	1631.4	1612.4	1322.5	1377.2	1355.5	1311.3	1192.4	1098.2	813.7	704.2	854.2	664.7

Distance between Notional Source Positions and NSRs (Slant Distance)

NSR No. WorkSite	1	2	3	6	7	8	9	10	11	12	13	14	15	16	17	18	19
55	2323.0	2264.3	2156.6	2025.8	1806.6	1731.5	1712.5	1422.5	1477.2	1455.4	1411.1	1291.9	1185.3	907.7	797.9	953.2	764.7
56	2423.1	2364.5	2256.7	2126.0	1906.9	1831.7	1812.7	1522.7	1577.3	1555.5	1511.1	1391.5	1274.6	1003.8	893.7	1050.9	864.8
57	2522.8	2464.3	2356.4	2225.8	2006.6	1931.5	1912.4	1622.4	1677.0	1655.2	1610.6	1490.8	1364.6	1100.0	989.9	1149.6	964.5
58	2623.3	2564.9	2457.0	2326.4	2107.2	2032.0	2013.0	1723.0	1777.5	1755.7	1711.0	1590.9	1456.7	1194.5	1084.2	1249.3	1065.0
59	2720.2	2662.0	2554.0	2423.6	2204.4	2129.2	2110.1	1820.1	1874.5	1852.7	1807.9	1687.5	1543.6	1290.0	1180.5	1345.5	1162.1
61	2824.0	2766.0	2657.8	2527.5	2308.3	2233.1	2214.0	1923.9	1978.3	1956.4	1911.5	1790.8	1643.7	1393.0	1283.6	1448.3	1265.9
62	2923.0	2864.9	2756.8	2626.4	2407.2	2332.0	2313.0	2022.9	2077.3	2055.4	2010.4	1889.7	1738.7	1494.9	1384.8	1547.1	1364.9
63	3022.9	2964.6	2856.7	2726.0	2506.9	2431.8	2412.8	2122.8	2177.2	2155.4	2110.4	1989.8	1831.4	1595.0	1485.3	1647.2	1464.8
64	3123.3	3064.7	2957.0	2826.0	2607.1	2532.0	2513.0	2223.0	2277.6	2255.8	2210.9	2090.4	1923.9	1692.0	1582.3	1747.9	1565.1
65	3222.9	3164.1	3056.6	2925.2	2706.4	2631.4	2612.4	2322.5	2377.2	2355.4	2310.6	2190.2	2015.5	1788.4	1678.8	1847.8	1664.7
66	3323.9	3264.7	3157.5	3025.7	2807.2	2732.2	2713.2	2423.4	2478.2	2456.4	2411.7	2291.5	2109.6	1886.4	1777.0	1949.1	1765.6
67	3411.3	3351.9	3244.9	3112.8	2894.4	2819.4	2800.5	2510.7	2565.6	2543.8	2499.2	2379.1	2180.8	1967.7	1859.2	2036.8	1853.0
68	2748.6	2690.5	2582.4	2452.0	2232.8	2157.6	2138.6	1848.5	1903.0	1881.1	1836.2	1715.9	1562.3	1318.8	1209.3	1373.8	1190.5
69	2764.4	2706.3	2598.2	2467.8	2248.6	2173.4	2154.4	1864.3	1918.7	1896.9	1852.0	1731.6	1577.3	1334.4	1224.9	1389.5	1206.3
70	2777.9	2719.7	2611.6	2481.3	2262.0	2186.8	2167.8	1877.7	1932.2	1910.3	1865.4	1745.0	1589.9	1347.7	1238.2	1402.8	1219.7
71	2790.9	2732.8	2624.7	2494.4	2275.1	2199.9	2180.9	1890.8	1945.2	1923.3	1878.4	1757.9	1602.7	1360.8	1251.3	1415.7	1232.8
72	2389.7	2332.8	2223.7	2095.0	1875.1	1799.7	1780.6	1490.3	1544.2	1522.2	1477.0	1356.0	1249.2	976.7	866.9	1013.9	832.2
84	2789.3	2731.1	2623.0	2492.6	2273.4	2198.2	2179.2	1889.1	1943.6	1921.7	1876.8	1756.4	1599.3	1358.6	1249.1	1414.3	1231.1
85	2926.1	2868.2	2759.9	2629.7	2410.5	2335.2	2316.2	2026.1	2080.4	2058.5	2013.5	1892.8	1730.8	1494.7	1385.3	1550.2	1368.0
88	1279.8	1175.7	1134.1	964.2	835.4	798.4	789.4	668.1	710.3	711.3	729.2	777.7	268.0	596.9	691.6	884.6	861.9
89	1452.0	1396.6	1286.2	1160.4	939.3	863.4	844.2	553.8	606.6	584.5	540.2	422.5	634.9	283.4	271.9	115.8	105.6
90	1467.0	1410.0	1300.8	1173.1	952.5	876.8	857.7	567.3	621.3	599.4	556.2	440.9	618.4	263.0	247.8	141.1	87.7
91	1481.9	1423.5	1315.5	1185.9	965.9	890.5	871.4	581.3	636.3	614.7	572.4	459.5	603.1	244.2	224.2	166.1	74.7
92	1496.8	1437.0	1330.1	1198.8	979.4	904.3	885.3	595.8	651.6	630.3	589.0	478.5	588.2	226.4	201.0	190.9	68.5
93	1511.7	1450.6	1344.9	1211.8	993.2	918.4	899.5	610.6	667.3	646.2	605.8	497.6	574.3	210.2	178.4	215.6	70.3
94	1527.6	1465.1	1360.6	1225.9	1008.0	933.6	914.8	626.8	684.2	663.4	624.0	518.1	560.5	195.1	155.0	241.0	80.1
95	1543.6	1479.9	1376.5	1240.2	1023.2	949.2	930.4	643.6	701.5	681.0	642.6	538.9	547.8	182.5	133.0	266.1	95.7
96	1560.1	1495.2	1393.0	1255.2	1039.1	965.4	946.7	661.0	719.4	699.2	661.6	559.8	536.9	173.5	112.9	291.1	113.8
97	1577.1	1511.0	1409.9	1270.7	1055.5	982.2	963.6	679.1	738.0	718.0	681.3	581.5	527.1	167.9	94.4	315.9	133.5
98	1594.2	1526.9	1426.9	1286.3	1072.1	999.2	980.7	697.5	756.9	737.2	701.3	603.5	517.5	165.1	78.4	341.1	155.2
99	1610.3	1541.9	1443.0	1301.2	1087.9	1015.4	997.1	715.2	775.0	755.5	720.4	624.4	509.0	165.6	67.8	365.7	177.0
100	1628.9	1559.9	1461.6	1319.1	1106.3	1034.0	1015.7	734.4	794.2	774.7	739.6	645.7	505.4	173.9	68.8	391.2	196.7
101	1646.5	1576.7	1479.2	1335.9	1123.8	1051.8	1033.6	754.0	814.3	795.3	761.6	668.7	504.2	184.0	76.6	414.3	217.2
115	1557.2	1499.8	1391.0	1262.3	1042.1	966.6	947.4	656.9	711.0	689.1	644.8	527.3	620.8	254.9	199.5	234.0	23.0
116	1783.4	1724.9	1617.0	1486.8	1267.2	1192.0	1172.9	882.9	937.7	916.0	872.5	755.6	746.5	406.2	305.6	423.9	225.2
117	1869.8	1811.1	1703.4	1572.9	1353.5	1278.3	1259.2	969.2	1024.1	1002.4	958.8	841.6	804.9	478.7	373.4	508.3	311.6
118	1912.3	1853.7	1745.9	1615.5	1396.0	1320.8	1301.7	1011.7	1066.6	1044.8	1001.1	883.6	836.8	516.3	409.6	549.1	354.0
123	669.7	611.8	503.2	378.7	157.2	81.9	61.6	219.3	167.4	190.3	243.4	372.7	837.8	809.9	904.8	713.2	877.0
124	668.4	610.6	501.9	377.8	156.4	81.1	60.9	227.8	175.3	198.2	251.0	380.2	852.0	819.7	914.2	721.0	885.5
135	1576.1	1515.6	1409.4	1276.9	1058.1	983.2	964.2	674.8	730.8	710.3	677.4	578.2	576.0	212.9	146.4	289.4	76.7
136	1604.3	1545.7	1437.8	1308.0	1088.0	1012.7	993.6	703.6	758.6	737.0	694.2	579.2	656.3	291.3	224.7	260.7	47.1
137	1704.6	1648.3	1538.5	1410.6	1190.0	1114.3	1095.1	803.4	856.6	834.2	787.5	690.9	683.8	339.8	241.3	388.4	168.4
138	1808.5	1752.2	1642.6	1515.0	1294.6	1219.0	1199.8	909.4	963.0	940.9	896.1	776.0	787.0	446.4	346.4	436.8	251.5

Distance between Notional Source Positions and NSRs (Slant Distance)

NSR No. WorkSite	1	2	3	6	7	8	9	10	11	12	13	14	15	16	17	18	19
139	1836.2	1775.5	1669.4	1536.6	1318.1	1243.3	1224.3	935.1	991.0	969.6	927.3	812.9	754.3	429.9	323.4	486.2	281.0
140	1911.8	1857.7	1746.4	1621.5	1400.4	1324.5	1305.3	1014.9	1067.2	1045.0	998.9	876.4	893.5	559.0	456.8	533.7	360.0
141	1925.6	1865.5	1759.0	1626.7	1408.0	1333.1	1314.1	1024.6	1080.2	1058.7	1015.8	900.0	829.6	514.2	405.8	569.0	368.7
142	2005.1	1951.0	1839.7	1714.6	1493.6	1417.8	1398.5	1108.1	1160.6	1138.3	1092.2	969.4	955.1	635.9	529.9	626.1	452.2
143	1201.7	1114.1	1033.7	875.0	668.8	603.9	587.2	320.6	383.1	365.7	338.5	267.6	494.6	267.1	343.4	252.1	319.7
144	1176.8	1105.4	1009.8	864.5	654.1	583.6	565.8	297.3	359.2	343.7	327.9	292.8	410.3	274.7	374.6	351.3	410.0

Distance between Notional Source Positions and NSRs (Slant Distance)

NSR No. WorkSite	20	21	22	23	24	25	26	27	28	29	30	31	32	33	34	35
1	1597.2	1625.5	1651.7	1502.6	2253.1	2306.2	2376.1	2550.9	2681.5	2976.8	3208.6	3508.1	3599.1	3495.6	3582.7	3726.1
2	1575.7	1604.8	1631.8	1483.0	2234.9	2287.9	2357.1	2534.1	2662.3	2953.3	3188.7	3484.6	3575.2	3478.1	3565.9	3706.9
3	1550.8	1580.7	1608.5	1460.3	2213.0	2265.9	2334.3	2513.7	2639.0	2925.1	3164.4	3456.2	3546.4	3456.5	3545.0	3683.4
4	1519.6	1550.4	1578.8	1431.5	2184.2	2236.9	2304.4	2486.2	2608.6	2889.6	3132.7	3420.4	3510.1	3427.4	3516.5	3652.2
5	1488.3	1519.7	1548.6	1402.1	2154.3	2206.8	2273.6	2457.1	2577.3	2854.6	3100.3	3385.1	3474.4	3396.9	3486.4	3620.2
6	1454.8	1486.6	1515.9	1370.0	2121.6	2173.9	2240.2	2424.8	2543.5	2818.0	3065.6	3348.2	3437.2	3363.5	3453.4	3585.7
7	1413.3	1445.6	1475.2	1330.0	2080.7	2133.0	2198.7	2384.5	2501.5	2772.9	3022.7	3302.8	3391.4	3321.9	3412.1	3542.9
8	1362.7	1395.6	1425.7	1281.5	2030.8	2082.8	2147.7	2335.1	2450.1	2722.4	2971.5	3252.4	3341.3	3270.6	3361.3	3491.6
10	1342.0	1374.4	1404.2	1259.5	2009.5	2061.7	2127.2	2313.5	2429.8	2701.1	2950.7	3231.0	3319.8	3250.2	3340.6	3470.9
11	1338.1	1370.4	1400.2	1255.3	2005.6	2057.7	2123.4	2309.4	2426.1	2698.0	2947.3	3228.0	3316.9	3246.5	3336.8	3467.4
13	1272.0	1304.3	1334.1	1189.3	1939.5	1991.7	2057.2	2243.4	2360.0	2638.5	2882.6	3169.2	3258.6	3180.4	3270.7	3402.4
14	1219.3	1251.5	1281.2	1136.3	1886.7	1938.9	2004.6	2190.5	2307.5	2582.1	2829.0	3112.8	3202.3	3127.8	3218.0	3349.1
15	1164.4	1196.5	1226.1	1081.0	1831.6	1883.9	1949.7	2135.3	2252.8	2527.5	2774.7	3057.9	3147.2	3073.0	3163.1	3294.7
16	1117.3	1149.4	1178.9	1033.7	1784.5	1836.7	1902.7	2088.1	2205.9	2483.1	2728.0	3014.1	3103.9	3026.0	3116.0	3248.0
17	1067.6	1099.5	1129.0	983.7	1734.6	1786.9	1853.0	2038.2	2156.3	2434.8	2678.6	2965.9	3055.8	2976.3	3066.3	3198.6
18	1018.2	1050.1	1079.5	934.1	1685.1	1737.4	1803.6	1988.6	2107.0	2386.8	2629.6	2917.9	3008.0	2926.9	3016.8	3149.5
19	969.7	1001.4	1030.8	885.2	1636.4	1688.8	1755.1	1939.9	2058.6	2339.4	2581.5	2870.7	2960.9	2878.4	2968.3	3101.3
20	936.6	968.2	997.4	851.7	1603.1	1655.5	1722.0	1906.4	2025.6	2305.6	2548.8	2836.6	2926.5	2845.3	2935.0	3068.6
27	864.1	895.5	924.5	778.5	1530.3	1582.7	1649.4	1833.4	1953.2	2234.9	2476.8	2766.0	2856.1	2772.7	2862.3	2996.4
28	814.0	845.2	874.2	728.0	1479.9	1532.3	1599.2	1782.9	1903.1	2186.0	2427.0	2717.2	2807.4	2722.4	2812.0	2946.5
29	762.3	793.5	822.6	676.6	1428.3	1480.7	1547.5	1731.4	1851.4	2134.5	2375.2	2665.7	2756.0	2670.8	2760.3	2894.8
30	712.4	743.6	772.7	626.8	1378.4	1430.8	1497.6	1681.5	1801.6	2085.3	2325.5	2616.5	2706.9	2620.9	2710.4	2845.0
31	675.5	706.7	735.7	589.9	1341.4	1393.9	1460.6	1644.6	1764.6	2048.8	2288.5	2580.0	2670.5	2583.9	2673.5	2808.0
32	763.6	794.5	823.3	676.8	1429.0	1481.5	1548.6	1731.8	1852.7	2137.3	2376.9	2668.6	2759.0	2671.7	2761.1	2896.3
33	713.7	744.5	773.2	626.8	1378.9	1431.4	1498.6	1681.7	1802.8	2088.2	2327.1	2619.5	2710.0	2621.7	2711.1	2846.5
34	675.9	706.6	735.3	588.8	1340.9	1393.5	1460.6	1643.7	1764.9	2051.0	2289.3	2582.3	2672.9	2583.8	2673.1	2808.7
35	639.0	669.9	698.8	552.7	1304.5	1356.9	1423.9	1607.5	1728.0	2013.7	2252.3	2545.0	2635.6	2547.1	2636.6	2771.7
36	579.6	610.7	639.7	494.1	1245.4	1297.9	1364.7	1548.7	1668.7	1954.0	2192.8	2485.2	2575.9	2487.9	2577.5	2712.2
37	531.6	562.9	592.1	447.0	1197.8	1250.2	1316.8	1501.2	1620.8	1906.1	2144.8	2437.4	2528.1	2440.1	2529.7	2664.3
38	459.4	490.3	519.3	373.8	1125.0	1177.5	1244.4	1428.3	1548.5	1835.7	2072.9	2367.0	2457.8	2367.6	2457.1	2592.2
39	370.0	401.3	430.8	286.9	1036.4	1088.7	1155.2	1340.1	1459.1	1746.0	1983.3	2277.3	2368.2	2278.5	2368.2	2502.7
40	281.5	313.4	343.5	202.4	948.6	1000.8	1066.9	1252.7	1370.6	1657.1	1894.4	2188.4	2279.3	2190.2	2280.1	2413.9
41	194.2	227.1	258.1	127.9	862.0	914.0	979.6	1166.5	1283.0	1569.1	1806.5	2100.4	2191.4	2102.9	2192.9	2326.1
46	122.7	160.7	195.0	102.0	785.9	837.5	902.0	1091.0	1204.5	1488.2	1727.1	2019.5	2110.4	2024.9	2115.4	2246.9
47	55.4	92.2	126.0	110.1	694.8	744.7	808.3	1000.8	1110.4	1393.2	1632.4	1924.5	2015.5	1930.9	2021.6	2152.2
48	63.8	67.4	83.8	171.2	596.8	647.7	710.5	902.3	1012.1	1295.5	1533.9	1826.7	1917.9	1832.8	1923.6	2053.7
49	144.0	130.4	121.8	253.8	501.1	549.0	610.9	804.7	912.1	1196.8	1433.8	1728.0	1819.3	1732.8	1823.8	1953.6
50	232.0	215.5	200.7	342.4	409.1	455.1	511.8	710.8	812.4	1098.8	1334.0	1629.7	1721.3	1633.2	1724.3	1853.9
51	332.3	306.8	291.3	436.1	317.1	362.2	411.3	616.3	711.1	1001.0	1232.6	1529.9	1622.5	1531.9	1623.1	1752.4
52	432.6	404.8	380.6	529.7	232.9	275.5	323.9	527.3	611.6	900.9	1132.5	1431.0	1523.2	1432.4	1523.9	1652.3
53	531.2	503.1	478.4	627.7	163.4	196.7	236.5	441.2	515.8	805.8	1033.5	1332.7	1425.0	1334.3	1428.5	1553.4
54	630.5	602.2	577.0	726.4	128.6	136.7	153.5	357.1	417.7	715.0	934.6	1238.6	1332.9	1236.3	1328.5	1454.5

Distance between Notional Source Positions and NSRs (Slant Distance)

NSR No. WorkSite	20	21	22	23	24	25	26	27	28	29	30	31	32	33	34	35
55	730.4	701.7	676.2	825.6	155.8	128.0	93.2	278.5	322.3	621.4	834.1	1143.7	1237.9	1136.6	1229.1	1354.1
56	830.3	801.4	775.6	924.9	225.1	181.1	110.4	216.7	231.0	528.8	733.9	1048.1	1142.3	1037.2	1130.0	1253.8
57	929.9	900.8	874.7	1024.1	309.0	260.1	183.8	188.9	144.0	438.8	634.2	952.9	1047.4	938.3	1033.8	1154.1
58	1030.4	1001.1	974.8	1124.1	400.5	349.6	272.8	208.3	73.4	352.4	533.7	858.7	953.3	838.8	934.3	1053.6
59	1127.3	1097.9	1071.4	1220.6	487.7	435.9	359.3	259.6	84.3	279.2	436.6	770.0	864.7	742.7	836.7	956.4
61	1231.0	1201.4	1174.7	1323.9	584.2	532.1	453.8	339.6	166.5	215.1	332.8	671.4	766.2	641.0	738.6	852.5
62	1330.0	1300.4	1273.6	1422.8	677.5	624.4	551.3	423.5	248.7	187.3	233.9	580.9	675.5	555.3	651.9	753.6
63	1430.0	1400.4	1373.7	1522.9	777.3	724.1	651.2	513.6	347.3	200.6	134.6	489.7	583.6	466.1	562.9	654.3
64	1530.4	1501.0	1474.3	1623.5	877.8	824.7	751.9	608.7	447.7	253.1	50.4	401.3	493.9	378.6	475.6	555.1
65	1630.1	1600.7	1574.1	1723.3	977.6	924.4	851.7	702.4	547.4	326.1	40.8	320.0	409.5	299.4	395.2	461.7
66	1731.1	1701.9	1675.4	1824.6	1078.9	1025.7	953.1	798.9	648.7	410.9	121.2	248.3	330.1	233.3	323.3	367.9
67	1818.6	1789.4	1763.0	1912.2	1166.7	1113.6	1040.9	886.4	736.5	477.8	208.7	208.5	278.2	204.8	283.2	301.5
68	1155.7	1126.3	1099.8	1249.0	507.8	455.2	380.4	267.6	91.9	276.0	452.9	772.1	866.6	759.4	853.5	972.7
69	1171.5	1142.0	1115.5	1264.7	523.1	470.4	395.8	279.5	104.3	266.4	438.6	758.8	853.3	745.2	839.5	958.4
70	1184.9	1155.4	1128.9	1278.1	536.1	483.3	408.9	289.6	115.1	257.4	424.9	746.1	840.7	731.7	826.0	944.7
71	1197.9	1168.4	1141.8	1291.0	548.5	495.7	421.4	299.0	125.5	249.5	412.0	734.4	829.0	718.8	813.1	931.7
72	796.8	766.8	740.0	889.1	158.4	110.9	39.7	204.0	274.0	588.4	797.2	1110.3	1204.0	1094.6	1186.3	1316.0
84	1196.3	1166.9	1140.3	1289.5	547.3	494.5	420.1	298.7	124.9	252.0	412.7	735.9	830.5	718.5	812.7	932.3
85	1333.1	1303.5	1276.7	1425.8	680.7	627.7	554.4	413.5	251.5	194.0	277.9	611.5	706.2	587.2	682.4	797.5
88	898.9	935.1	968.1	897.9	1448.7	1490.1	1531.4	1735.9	1793.4	1966.0	2259.5	2468.3	2547.6	2583.4	2679.7	2766.0
89	137.6	168.4	198.5	69.4	803.5	855.7	922.2	1107.6	1226.3	1518.3	1751.1	2049.3	2140.8	2045.5	2135.2	2270.2
90	123.5	157.1	189.1	78.4	791.3	843.3	908.8	1096.0	1212.2	1500.7	1736.1	2031.8	2123.1	2032.1	2122.1	2255.5
91	113.7	149.7	183.1	93.1	780.2	831.9	896.4	1085.4	1199.1	1483.9	1721.9	2015.2	2106.3	2019.4	2109.8	2241.6
92	108.9	146.3	180.5	111.3	770.1	821.3	884.7	1075.4	1186.5	1467.7	1708.1	1999.0	2089.8	2007.1	2097.9	2228.0
93	109.3	146.9	181.1	131.2	760.5	811.3	873.6	1066.0	1174.3	1451.7	1694.6	1982.9	2073.5	1995.1	2086.3	2214.7
94	115.3	151.6	185.0	153.0	751.2	801.5	862.6	1056.5	1162.0	1435.2	1680.8	1966.4	2056.7	1982.8	2074.4	2201.0
95	126.1	160.2	192.3	175.7	742.9	792.7	852.4	1047.9	1150.3	1419.3	1667.5	1950.3	2040.4	1971.0	2062.9	2187.8
96	139.7	171.3	201.6	198.7	734.8	783.9	842.2	1039.1	1138.6	1403.4	1654.0	1934.1	2023.8	1959.0	2051.2	2174.3
97	155.7	184.6	213.1	221.2	727.1	775.6	832.5	1030.7	1127.1	1387.5	1640.6	1917.9	2007.4	1947.0	2039.5	2160.8
98	174.4	200.8	227.4	244.3	720.8	768.5	823.8	1023.3	1116.5	1372.2	1627.8	1902.2	1991.4	1935.6	2028.5	2147.9
99	193.9	218.3	243.1	267.4	715.7	762.7	816.5	1017.0	1107.0	1358.0	1616.1	1887.5	1976.3	1925.2	2018.4	2136.0
100	210.8	232.6	255.3	290.3	703.5	749.6	801.6	1003.2	1089.7	1335.6	1596.3	1864.5	1953.0	1906.8	2000.2	2115.9
101	227.4	247.3	268.3	312.0	696.0	741.3	792.0	994.2	1077.9	1319.9	1582.5	1848.4	1936.6	1894.0	1987.7	2101.8
115	47.7	83.0	116.3	119.2	691.9	742.9	805.5	997.4	1106.6	1383.5	1627.2	1915.0	2005.3	1927.4	2018.4	2147.4
116	192.4	167.6	153.4	294.1	476.2	526.1	587.0	781.3	887.5	1171.8	1408.8	1702.9	1794.4	1708.3	1799.4	1928.7
117	278.5	252.9	232.1	379.0	397.5	446.7	506.8	702.0	807.1	1094.5	1328.7	1625.2	1717.0	1627.8	1719.0	1848.5
118	320.6	294.2	272.2	420.1	356.0	404.8	464.2	660.2	764.3	1052.8	1288.0	1583.4	1675.3	1585.1	1676.3	1805.8
123	912.6	943.8	972.7	826.5	1578.4	1630.9	1697.8	1881.4	2001.7	2283.8	2525.4	2814.9	2905.0	2821.0	2910.5	3045.0
124	921.0	952.1	981.0	834.6	1586.7	1639.2	1706.1	1889.6	2010.1	2292.6	2533.9	2823.7	2913.9	2829.3	2918.8	3053.5
135	82.0	103.4	128.7	173.8	653.9	703.3	762.4	958.7	1059.6	1321.8	1575.4	1852.7	1941.6	1880.3	1972.4	2095.9
136	28.9	47.1	74.3	134.5	581.9	632.5	694.1	887.6	994.5	1347.6	1555.9	1878.2	1970.4	1815.8	1907.2	2064.8
137	152.2	144.2	142.3	261.2	515.7	561.5	618.3	816.7	915.8	1188.2	1433.4	1719.5	1810.1	1736.5	1828.3	1953.7
138	215.2	185.1	158.5	309.3	424.6	475.7	539.7	730.1	842.8	1137.4	1367.0	1667.7	1759.7	1662.8	1753.2	1886.2

Distance between Notional Source Positions and NSRs (Slant Distance)

NSR No. WorkSite	20	21	22	23	24	25	26	27	28	29	30	31	32	33	34	35
139	251.4	230.5	214.9	356.3	438.0	486.1	543.4	741.2	840.8	1118.5	1359.3	1649.7	1740.9	1661.5	1753.3	1879.5
140	322.1	289.6	260.9	409.5	328.1	379.9	446.4	633.2	751.1	1057.2	1277.5	1585.7	1678.5	1569.5	1659.2	1795.6
141	337.1	312.8	294.1	439.2	350.2	396.9	452.3	651.5	748.8	1028.8	1267.5	1559.9	1651.4	1569.5	1661.3	1787.6
142	414.9	382.8	354.2	502.6	199.0	249.8	314.2	504.6	618.5	924.0	1144.5	1452.4	1545.2	1437.7	1527.7	1662.9
143	359.1	394.8	427.7	302.2	1023.5	1074.6	1137.1	1328.9	1437.5	1708.9	1956.4	2240.1	2330.3	2258.4	2349.7	2476.7
144	450.3	487.2	521.0	403.6	1105.5	1155.5	1215.3	1410.7	1512.2	1769.2	2026.0	2298.3	2386.8	2332.4	2424.7	2546.2

Distance Correction, dB(A)

NSR No. WorkSite	1	2	3	6	7	8	9	10	11	12	13	14	15	16	17	18	19
1	-48.8	-54.7	-54.7	-59.7	-62.9	-63.8	-64.1	-67.2	-66.6	-66.8	-67.3	-68.3	-71.5	-71.6	-72.1	-70.8	-71.9
2	-44.1	-52.0	-52.7	-58.6	-62.3	-63.4	-63.6	-67.0	-66.4	-66.6	-67.0	-68.1	-71.3	-71.4	-72.0	-70.7	-71.8
3	-39.1	-47.4	-50.2	-57.2	-61.7	-62.9	-63.2	-66.7	-66.1	-66.3	-66.8	-68.0	-71.0	-71.2	-71.8	-70.5	-71.6
4	-45.2	-41.7	-48.0	-55.5	-60.9	-62.3	-62.6	-66.3	-65.8	-66.0	-66.5	-67.7	-70.6	-70.9	-71.5	-70.4	-71.4
5	-49.9	-40.1	-47.2	-53.8	-60.3	-61.7	-62.1	-66.0	-65.4	-65.7	-66.2	-67.5	-70.3	-70.7	-71.3	-70.2	-71.2
6	-52.2	-44.6	-47.6	-51.9	-59.5	-61.1	-61.5	-65.6	-65.0	-65.3	-65.9	-67.2	-70.0	-70.4	-71.1	-70.0	-71.0
7	-54.4	-48.9	-48.9	-49.1	-58.5	-60.3	-60.7	-65.2	-64.5	-64.8	-65.5	-66.8	-69.7	-70.1	-70.8	-69.7	-70.8
8	-56.3	-52.0	-50.6	-44.6	-57.2	-59.3	-59.7	-64.6	-63.9	-64.2	-64.9	-66.4	-69.4	-69.8	-70.5	-69.4	-70.4
10	-57.4	-54.1	-52.0	-41.4	-56.5	-58.7	-59.2	-64.3	-63.6	-63.9	-64.6	-66.1	-69.2	-69.6	-70.3	-69.2	-70.3
11	-57.2	-53.9	-51.6	-40.2	-56.4	-58.6	-59.1	-64.2	-63.5	-63.9	-64.6	-66.1	-69.2	-69.6	-70.3	-69.2	-70.3
13	-58.5	-55.8	-53.3	-31.3	-53.9	-56.7	-57.3	-63.3	-62.5	-62.9	-63.7	-65.4	-68.8	-69.2	-69.9	-68.7	-69.8
14	-59.7	-57.6	-55.0	-43.2	-51.2	-54.9	-55.6	-62.4	-61.6	-62.0	-62.9	-64.7	-68.5	-68.8	-69.5	-68.2	-69.5
15	-60.7	-59.0	-56.6	-49.3	-47.1	-52.4	-53.3	-61.5	-60.5	-61.0	-62.0	-64.0	-68.1	-68.3	-69.1	-67.7	-69.0
16	-61.5	-59.9	-57.8	-52.0	-41.1	-49.5	-50.7	-60.6	-59.5	-60.0	-61.1	-63.3	-67.8	-68.0	-68.8	-67.3	-68.7
17	-62.3	-61.0	-58.9	-54.3	-34.1	-44.8	-46.8	-59.5	-58.3	-58.9	-60.1	-62.5	-67.5	-67.6	-68.4	-66.8	-68.3
18	-63.0	-61.9	-60.0	-56.2	-40.3	-37.4	-39.7	-58.2	-56.8	-57.5	-58.9	-61.7	-67.2	-67.2	-68.0	-66.3	-67.8
19	-63.7	-62.7	-60.9	-57.7	-46.7	-35.5	-30.4	-56.8	-55.1	-56.0	-57.7	-60.7	-66.9	-66.7	-67.6	-65.8	-67.4
20	-64.2	-63.4	-61.6	-58.9	-50.3	-43.0	-39.0	-55.7	-53.8	-54.7	-56.6	-60.0	-66.6	-66.4	-67.3	-65.4	-67.1
27	-65.0	-64.2	-62.6	-60.3	-53.7	-49.3	-47.6	-52.6	-49.6	-51.1	-53.9	-58.3	-66.2	-65.7	-66.7	-64.5	-66.4
28	-65.6	-64.9	-63.4	-61.3	-55.7	-52.4	-51.3	-49.7	-44.9	-47.4	-51.5	-56.9	-65.9	-65.1	-66.2	-63.8	-65.8
29	-66.1	-65.5	-64.1	-62.2	-57.3	-54.7	-53.9	-44.9	-38.2	-42.5	-48.9	-55.5	-65.5	-64.6	-65.7	-63.0	-65.2
30	-66.7	-66.1	-64.8	-63.0	-58.7	-56.5	-55.9	-36.2	-37.0	-36.4	-45.6	-53.7	-65.2	-64.0	-65.1	-62.2	-64.6
31	-67.1	-66.5	-65.3	-63.7	-59.8	-57.9	-57.3	-31.7	-43.4	-41.1	-43.8	-52.0	-64.9	-63.5	-64.7	-61.6	-64.1
32	-66.1	-65.5	-64.1	-62.2	-57.3	-54.7	-53.9	-45.6	-35.3	-41.0	-48.4	-55.3	-65.6	-64.7	-65.8	-63.0	-65.2
33	-66.6	-66.1	-64.8	-63.0	-58.7	-56.5	-55.9	-39.4	-32.3	-30.0	-44.6	-53.4	-65.3	-64.1	-65.2	-62.2	-64.6
34	-67.1	-66.5	-65.3	-63.7	-59.8	-57.9	-57.4	-36.4	-42.8	-38.9	-41.8	-51.5	-65.1	-63.6	-64.8	-61.6	-64.1
35	-67.4	-66.9	-65.7	-64.2	-60.5	-58.8	-58.3	-40.0	-47.1	-44.8	-43.1	-49.7	-64.7	-63.0	-64.3	-60.9	-63.6
36	-67.8	-67.3	-66.2	-64.8	-61.4	-59.9	-59.4	-46.5	-50.7	-49.2	-46.4	-47.2	-64.4	-62.1	-63.4	-59.7	-62.7
37	-68.4	-67.9	-66.8	-65.5	-62.5	-61.1	-60.7	-51.1	-53.8	-52.8	-50.8	-46.9	-64.1	-61.4	-62.8	-58.6	-61.9
38	-68.7	-68.3	-67.3	-66.0	-63.2	-62.0	-61.6	-53.6	-55.7	-54.9	-53.2	-47.7	-63.8	-60.3	-61.7	-56.5	-60.6
39	-69.4	-69.0	-68.1	-66.9	-64.5	-63.4	-63.1	-56.9	-58.5	-57.9	-56.7	-52.4	-63.4	-58.8	-60.1	-53.6	-58.5
40	-70.1	-69.7	-68.8	-67.8	-65.5	-64.6	-64.4	-59.3	-60.5	-60.0	-59.1	-55.9	-63.2	-57.2	-58.4	-50.8	-55.8
41	-70.6	-70.3	-69.5	-68.5	-66.5	-65.7	-65.5	-61.2	-62.2	-61.8	-61.0	-58.5	-63.2	-55.9	-56.6	-49.3	-52.0
46	-71.2	-70.8	-70.1	-69.2	-67.3	-66.6	-66.4	-62.7	-63.5	-63.2	-62.5	-60.5	-63.4	-55.3	-55.0	-52.1	-46.1
47	-71.7	-71.3	-70.7	-69.8	-68.1	-67.4	-67.2	-63.9	-64.6	-64.4	-63.8	-62.0	-63.7	-55.8	-54.0	-54.8	-34.6
48	-72.2	-71.9	-71.3	-70.5	-68.9	-68.3	-68.1	-65.2	-65.8	-65.6	-65.1	-63.6	-64.4	-57.4	-54.7	-57.5	-45.7
49	-72.7	-72.4	-71.8	-71.1	-69.6	-69.1	-68.9	-66.3	-66.9	-66.7	-66.2	-64.9	-65.1	-59.3	-56.7	-59.7	-52.4
50	-73.2	-72.9	-72.4	-71.7	-70.3	-69.8	-69.7	-67.3	-67.8	-67.6	-67.2	-66.0	-65.9	-61.1	-58.8	-61.5	-56.5
51	-73.7	-73.4	-72.9	-72.2	-71.0	-70.5	-70.4	-68.2	-68.7	-68.5	-68.1	-67.0	-66.7	-62.7	-60.8	-63.1	-59.3
52	-74.1	-73.9	-73.4	-72.8	-71.6	-71.1	-71.0	-69.0	-69.4	-69.3	-68.9	-68.0	-67.5	-64.0	-62.4	-64.4	-61.4
53	-74.5	-74.3	-73.8	-73.2	-72.1	-71.7	-71.6	-69.7	-70.1	-70.0	-69.7	-68.8	-68.1	-65.2	-63.8	-65.6	-63.0
54	-74.9	-74.7	-74.3	-73.7	-72.6	-72.3	-72.1	-70.4	-70.8	-70.6	-70.4	-69.5	-68.8	-66.2	-65.0	-66.6	-64.5

Distance Correction, dB(A)

NSR No. WorkSite	1	2	3	6	7	8	9	10	11	12	13	14	15	16	17	18	19
55	-75.3	-75.1	-74.7	-74.1	-73.1	-72.8	-72.7	-71.1	-71.4	-71.3	-71.0	-70.2	-69.5	-67.2	-66.0	-67.6	-65.7
56	-75.7	-75.5	-75.1	-74.6	-73.6	-73.3	-73.2	-71.7	-72.0	-71.8	-71.6	-70.9	-70.1	-68.0	-67.0	-68.4	-66.7
57	-76.0	-75.8	-75.4	-74.9	-74.0	-73.7	-73.6	-72.2	-72.5	-72.4	-72.1	-71.5	-70.7	-68.8	-67.9	-69.2	-67.7
58	-76.4	-76.2	-75.8	-75.3	-74.5	-74.2	-74.1	-72.7	-73.0	-72.9	-72.7	-72.0	-71.3	-69.5	-68.7	-69.9	-68.5
59	-76.7	-76.5	-76.1	-75.7	-74.9	-74.6	-74.5	-73.2	-73.5	-73.4	-73.1	-72.5	-71.8	-70.2	-69.4	-70.6	-69.3
61	-77.0	-76.8	-76.5	-76.1	-75.3	-75.0	-74.9	-73.7	-73.9	-73.8	-73.6	-73.1	-72.3	-70.9	-70.2	-71.2	-70.0
62	-77.3	-77.1	-76.8	-76.4	-75.6	-75.4	-75.3	-74.1	-74.4	-74.3	-74.1	-73.5	-72.8	-71.5	-70.8	-71.8	-70.7
63	-77.6	-77.4	-77.1	-76.7	-76.0	-75.7	-75.7	-74.5	-74.8	-74.7	-74.5	-74.0	-73.3	-72.1	-71.4	-72.3	-71.3
64	-77.9	-77.7	-77.4	-77.0	-76.3	-76.1	-76.0	-74.9	-75.1	-75.1	-74.9	-74.4	-73.7	-72.6	-72.0	-72.9	-71.9
65	-78.2	-78.0	-77.7	-77.3	-76.6	-76.4	-76.3	-75.3	-75.5	-75.4	-75.3	-74.8	-74.1	-73.0	-72.5	-73.3	-72.4
66	-78.4	-78.3	-78.0	-77.6	-77.0	-76.7	-76.7	-75.7	-75.9	-75.8	-75.6	-75.2	-74.5	-73.5	-73.0	-73.8	-72.9
67	-78.7	-78.5	-78.2	-77.9	-77.2	-77.0	-76.9	-76.0	-76.2	-76.1	-76.0	-75.5	-74.8	-73.9	-73.4	-74.2	-73.4
68	-76.8	-76.6	-76.2	-75.8	-75.0	-74.7	-74.6	-73.3	-73.6	-73.5	-73.3	-72.7	-71.9	-70.4	-69.7	-70.8	-69.5
69	-76.8	-76.6	-76.3	-75.8	-75.0	-74.7	-74.7	-73.4	-73.7	-73.6	-73.4	-72.8	-72.0	-70.5	-69.8	-70.9	-69.6
70	-76.9	-76.7	-76.3	-75.9	-75.1	-74.8	-74.7	-73.5	-73.7	-73.6	-73.4	-72.8	-72.0	-70.6	-69.9	-70.9	-69.7
71	-76.9	-76.7	-76.4	-75.9	-75.1	-74.8	-74.8	-73.5	-73.8	-73.7	-73.5	-72.9	-72.1	-70.7	-69.9	-71.0	-69.8
72	-75.6	-75.4	-74.9	-74.4	-73.5	-73.1	-73.0	-71.5	-71.8	-71.6	-71.4	-70.6	-69.9	-67.8	-66.8	-68.1	-66.4
84	-76.9	-76.7	-76.4	-75.9	-75.1	-74.8	-74.8	-73.5	-73.8	-73.7	-73.5	-72.9	-72.1	-70.7	-69.9	-71.0	-69.8
85	-77.3	-77.2	-76.8	-76.4	-75.6	-75.4	-75.3	-74.1	-74.4	-74.3	-74.1	-73.5	-72.8	-71.5	-70.8	-71.8	-70.7
88	-70.1	-69.4	-69.1	-67.7	-66.4	-66.0	-65.9	-64.5	-65.0	-65.0	-65.3	-65.8	-66.6	-63.5	-64.8	-66.9	-66.7
89	-71.2	-70.9	-70.2	-69.3	-67.5	-66.7	-66.5	-62.9	-63.7	-63.3	-62.7	-60.5	-64.1	-57.0	-56.7	-49.3	-48.5
90	-71.3	-71.0	-70.3	-69.4	-67.6	-66.9	-66.7	-63.1	-63.9	-63.6	-62.9	-60.9	-63.8	-56.4	-55.9	-51.0	-46.9
91	-71.4	-71.1	-70.4	-69.5	-67.7	-67.0	-66.8	-63.3	-64.1	-63.8	-63.2	-61.2	-63.6	-55.8	-55.0	-52.4	-45.5
92	-71.5	-71.1	-70.5	-69.6	-67.8	-67.1	-66.9	-63.5	-64.3	-64.0	-63.4	-61.6	-63.4	-55.1	-54.1	-53.6	-44.7
93	-71.6	-71.2	-70.6	-69.7	-67.9	-67.3	-67.1	-63.7	-64.5	-64.2	-63.6	-61.9	-63.2	-54.5	-53.0	-54.7	-44.9
94	-71.7	-71.3	-70.7	-69.8	-68.1	-67.4	-67.2	-63.9	-64.7	-64.4	-63.9	-62.3	-63.0	-53.8	-51.8	-55.6	-46.1
95	-71.8	-71.4	-70.8	-69.9	-68.2	-67.5	-67.4	-64.2	-64.9	-64.7	-64.2	-62.6	-62.8	-53.2	-50.5	-56.5	-47.6
96	-71.9	-71.5	-70.9	-70.0	-68.3	-67.7	-67.5	-64.4	-65.1	-64.9	-64.4	-63.0	-62.6	-52.8	-49.1	-57.3	-49.1
97	-72.0	-71.6	-71.0	-70.1	-68.5	-67.8	-67.7	-64.6	-65.4	-65.1	-64.7	-63.3	-62.4	-52.5	-47.5	-58.0	-50.5
98	-72.1	-71.7	-71.1	-70.2	-68.6	-68.0	-67.8	-64.9	-65.6	-65.4	-64.9	-63.6	-62.3	-52.4	-45.9	-58.7	-51.8
99	-72.1	-71.8	-71.2	-70.3	-68.7	-68.1	-68.0	-65.1	-65.8	-65.6	-65.2	-63.9	-62.1	-52.4	-44.6	-59.3	-53.0
100	-72.2	-71.9	-71.3	-70.4	-68.9	-68.3	-68.1	-65.3	-66.0	-65.8	-65.4	-64.2	-62.1	-52.8	-44.8	-59.8	-53.9
101	-72.3	-72.0	-71.4	-70.5	-69.0	-68.4	-68.3	-65.5	-66.2	-66.0	-65.6	-64.5	-62.1	-53.3	-45.7	-60.3	-54.7
115	-71.8	-71.5	-70.9	-70.0	-68.4	-67.7	-67.5	-64.4	-65.0	-64.8	-64.2	-62.4	-63.9	-56.1	-54.0	-55.4	-35.2
116	-73.0	-72.7	-72.2	-71.4	-70.1	-69.5	-69.4	-66.9	-67.4	-67.2	-66.8	-65.6	-65.5	-60.2	-57.7	-60.5	-55.0
117	-73.4	-73.2	-72.6	-71.9	-70.6	-70.1	-70.0	-67.7	-68.2	-68.0	-67.6	-66.5	-66.1	-61.6	-59.4	-62.1	-57.9
118	-73.6	-73.4	-72.8	-72.2	-70.9	-70.4	-70.3	-68.1	-68.6	-68.4	-68.0	-66.9	-66.5	-62.3	-60.2	-62.8	-59.0
123	-64.5	-63.7	-62.0	-59.6	-51.9	-46.3	-43.8	-54.8	-52.5	-53.6	-55.7	-59.4	-66.5	-66.2	-67.1	-65.1	-66.9
124	-64.5	-63.7	-62.0	-59.5	-51.9	-46.2	-43.7	-55.2	-52.9	-53.9	-56.0	-59.6	-66.6	-66.3	-67.2	-65.2	-66.9
135	-72.0	-71.6	-71.0	-70.1	-68.5	-67.9	-67.7	-64.6	-65.3	-65.0	-64.6	-63.2	-63.2	-54.6	-51.3	-57.2	-45.7
136	-72.1	-71.8	-71.2	-70.3	-68.7	-68.1	-67.9	-64.9	-65.6	-65.3	-64.8	-63.3	-64.3	-57.3	-55.0	-56.3	-41.5
137	-72.6	-72.3	-71.7	-71.0	-69.5	-68.9	-68.8	-66.1	-66.7	-66.4	-65.9	-64.8	-64.7	-58.6	-55.7	-59.8	-52.5
138	-73.1	-72.9	-72.3	-71.6	-70.2	-69.7	-69.6	-67.2	-67.7	-67.5	-67.0	-65.8	-65.9	-61.0	-58.8	-60.8	-56.0
139	-73.3	-73.0	-72.5	-71.7	-70.4	-69.9	-69.8	-67.4	-67.9	-67.7	-67.3	-66.2	-65.6	-60.7	-58.2	-61.7	-57.0
140	-73.6	-73.4	-72.8	-72.2	-70.9	-70.4	-70.3	-68.1	-68.6	-68.4	-68.0	-66.9	-67.0	-62.9	-61.2	-62.5	-59.1
141	-73.7	-73.4	-72.9	-72.2	-71.0	-70.5	-70.4	-68.2	-68.7	-68.5	-68.1	-67.1	-66.4	-62.2	-60.2	-63.1	-59.3

Distance Correction, dB(A)

NSR No. WorkSite	1	2	3	6	7	8	9	10	11	12	13	14	15	16	17	18	19
142	-74.0	-73.8	-73.3	-72.7	-71.5	-71.0	-70.9	-68.9	-69.3	-69.1	-68.8	-67.7	-67.6	-64.1	-62.5	-63.9	-61.1
143	-69.6	-68.9	-68.3	-66.8	-64.5	-63.6	-63.4	-58.1	-59.7	-59.3	-58.6	-56.5	-61.9	-56.5	-58.7	-56.0	-58.1
144	-69.4	-68.9	-68.1	-66.7	-64.3	-63.3	-63.1	-57.5	-59.1	-58.7	-58.3	-57.3	-60.3	-56.8	-59.5	-58.9	-60.3

Distance Correction, dB(A)

NSR No. WorkSite	20	21	22	23	24	25	26	27	28	29	30	31	32	33	34	35
1	-72.1	-72.2	-72.4	-71.5	-75.1	-75.3	-75.5	-76.1	-76.6	-77.5	-78.1	-78.9	-79.1	-78.9	-79.1	-79.4
2	-71.9	-72.1	-72.3	-71.4	-75.0	-75.2	-75.4	-76.1	-76.5	-77.4	-78.1	-78.8	-79.1	-78.8	-79.0	-79.4
3	-71.8	-72.0	-72.1	-71.3	-74.9	-75.1	-75.4	-76.0	-76.4	-77.3	-78.0	-78.8	-79.0	-78.8	-79.0	-79.3
4	-71.6	-71.8	-72.0	-71.1	-74.8	-75.0	-75.3	-75.9	-76.3	-77.2	-77.9	-78.7	-78.9	-78.7	-78.9	-79.3
5	-71.5	-71.6	-71.8	-70.9	-74.7	-74.9	-75.1	-75.8	-76.2	-77.1	-77.8	-78.6	-78.8	-78.6	-78.8	-79.2
6	-71.3	-71.4	-71.6	-70.7	-74.5	-74.7	-75.0	-75.7	-76.1	-77.0	-77.7	-78.5	-78.7	-78.5	-78.8	-79.1
7	-71.0	-71.2	-71.4	-70.5	-74.4	-74.6	-74.8	-75.5	-76.0	-76.9	-77.6	-78.4	-78.6	-78.4	-78.7	-79.0
8	-70.7	-70.9	-71.1	-70.2	-74.2	-74.4	-74.6	-75.4	-75.8	-76.7	-77.5	-78.2	-78.5	-78.3	-78.5	-78.9
10	-70.6	-70.8	-70.9	-70.0	-74.1	-74.3	-74.6	-75.3	-75.7	-76.6	-77.4	-78.2	-78.4	-78.2	-78.5	-78.8
11	-70.5	-70.7	-70.9	-70.0	-74.0	-74.3	-74.5	-75.3	-75.7	-76.6	-77.4	-78.2	-78.4	-78.2	-78.5	-78.8
13	-70.1	-70.3	-70.5	-69.5	-73.8	-74.0	-74.3	-75.0	-75.5	-76.4	-77.2	-78.0	-78.3	-78.0	-78.3	-78.6
14	-69.7	-69.9	-70.2	-69.1	-73.5	-73.8	-74.0	-74.8	-75.3	-76.2	-77.0	-77.9	-78.1	-77.9	-78.2	-78.5
15	-69.3	-69.6	-69.8	-68.7	-73.3	-73.5	-73.8	-74.6	-75.1	-76.1	-76.9	-77.7	-78.0	-77.8	-78.0	-78.4
16	-69.0	-69.2	-69.4	-68.3	-73.0	-73.3	-73.6	-74.4	-74.9	-75.9	-76.7	-77.6	-77.8	-77.6	-77.9	-78.2
17	-68.6	-68.8	-69.1	-67.9	-72.8	-73.0	-73.4	-74.2	-74.7	-75.7	-76.6	-77.4	-77.7	-77.5	-77.7	-78.1
18	-68.2	-68.4	-68.7	-67.4	-72.5	-72.8	-73.1	-74.0	-74.5	-75.6	-76.4	-77.3	-77.6	-77.3	-77.6	-78.0
19	-67.7	-68.0	-68.3	-66.9	-72.3	-72.6	-72.9	-73.8	-74.3	-75.4	-76.2	-77.2	-77.4	-77.2	-77.5	-77.8
20	-67.4	-67.7	-68.0	-66.6	-72.1	-72.4	-72.7	-73.6	-74.1	-75.3	-76.1	-77.1	-77.3	-77.1	-77.4	-77.7
27	-66.7	-67.0	-67.3	-65.8	-71.7	-72.0	-72.3	-73.3	-73.8	-75.0	-75.9	-76.8	-77.1	-76.9	-77.1	-77.5
28	-66.2	-66.5	-66.8	-65.2	-71.4	-71.7	-72.1	-73.0	-73.6	-74.8	-75.7	-76.7	-77.0	-76.7	-77.0	-77.4
29	-65.6	-66.0	-66.3	-64.6	-71.1	-71.4	-71.8	-72.8	-73.4	-74.6	-75.5	-76.5	-76.8	-76.5	-76.8	-77.2
30	-65.1	-65.4	-65.8	-63.9	-70.8	-71.1	-71.5	-72.5	-73.1	-74.4	-75.3	-76.4	-76.6	-76.4	-76.7	-77.1
31	-64.6	-65.0	-65.3	-63.4	-70.6	-70.9	-71.3	-72.3	-72.9	-74.2	-75.2	-76.2	-76.5	-76.2	-76.5	-77.0
32	-65.7	-66.0	-66.3	-64.6	-71.1	-71.4	-71.8	-72.8	-73.4	-74.6	-75.5	-76.5	-76.8	-76.5	-76.8	-77.2
33	-65.1	-65.4	-65.8	-63.9	-70.8	-71.1	-71.5	-72.5	-73.1	-74.4	-75.3	-76.4	-76.6	-76.4	-76.7	-77.1
34	-64.6	-65.0	-65.3	-63.4	-70.5	-70.9	-71.3	-72.3	-72.9	-74.2	-75.2	-76.2	-76.5	-76.2	-76.5	-77.0
35	-64.1	-64.5	-64.9	-62.8	-70.3	-70.7	-71.1	-72.1	-72.8	-74.1	-75.1	-76.1	-76.4	-76.1	-76.4	-76.9
36	-63.3	-63.7	-64.1	-61.9	-69.9	-70.3	-70.7	-71.8	-72.4	-73.8	-74.8	-75.9	-76.2	-75.9	-76.2	-76.7
37	-62.5	-63.0	-63.4	-61.0	-69.6	-69.9	-70.4	-71.5	-72.2	-73.6	-74.6	-75.7	-76.1	-75.7	-76.1	-76.5
38	-61.2	-61.8	-62.3	-59.5	-69.0	-69.4	-69.9	-71.1	-71.8	-73.3	-74.3	-75.5	-75.8	-75.5	-75.8	-76.3
39	-59.4	-60.1	-60.7	-57.2	-68.3	-68.7	-69.3	-70.5	-71.3	-72.8	-73.9	-75.1	-75.5	-75.2	-75.5	-76.0
40	-57.0	-57.9	-58.7	-54.1	-67.5	-68.0	-68.6	-70.0	-70.7	-72.4	-73.5	-74.8	-75.2	-74.8	-75.2	-75.7
41	-53.8	-55.1	-56.2	-50.1	-66.7	-67.2	-67.8	-69.3	-70.2	-71.9	-73.1	-74.4	-74.8	-74.5	-74.8	-75.3
46	-49.8	-52.1	-53.8	-48.2	-65.9	-66.5	-67.1	-68.8	-69.6	-71.5	-72.7	-74.1	-74.5	-74.1	-74.5	-75.0
47	-42.9	-47.3	-50.0	-48.8	-64.8	-65.4	-66.2	-68.0	-68.9	-70.9	-72.3	-73.7	-74.1	-73.7	-74.1	-74.7
48	-44.1	-44.6	-46.5	-52.7	-63.5	-64.2	-65.0	-67.1	-68.1	-70.2	-71.7	-73.2	-73.7	-73.3	-73.7	-74.3
49	-51.2	-50.3	-49.7	-56.1	-62.0	-62.8	-63.7	-66.1	-67.2	-69.6	-71.1	-72.8	-73.2	-72.8	-73.2	-73.8
50	-55.3	-54.7	-54.0	-58.7	-60.2	-61.2	-62.2	-65.0	-66.2	-68.8	-70.5	-72.2	-72.7	-72.3	-72.7	-73.4
51	-58.4	-57.7	-57.3	-60.8	-58.0	-59.2	-60.3	-63.8	-65.0	-68.0	-69.8	-71.7	-72.2	-71.7	-72.2	-72.9
52	-60.7	-60.1	-59.6	-62.5	-55.3	-56.8	-58.2	-62.4	-63.7	-67.1	-69.1	-71.1	-71.7	-71.1	-71.7	-72.4
53	-62.5	-62.0	-61.6	-64.0	-52.3	-53.9	-55.5	-60.9	-62.2	-66.1	-68.3	-70.5	-71.1	-70.5	-71.1	-71.8
54	-64.0	-63.6	-63.2	-65.2	-50.2	-50.7	-51.7	-59.1	-60.4	-65.1	-67.4	-69.9	-70.5	-69.8	-70.5	-71.3

Distance Correction, dB(A)

NSR No. WorkSite	20	21	22	23	24	25	26	27	28	29	30	31	32	33	34	35
55	-65.3	-64.9	-64.6	-66.3	-51.9	-50.1	-47.4	-56.9	-58.2	-63.9	-66.4	-69.2	-69.9	-69.1	-69.8	-70.6
56	-66.4	-66.1	-65.8	-67.3	-55.0	-53.2	-48.9	-54.7	-55.3	-62.5	-65.3	-68.4	-69.2	-68.3	-69.1	-70.0
57	-67.4	-67.1	-66.8	-68.2	-57.8	-56.3	-53.3	-53.5	-51.2	-60.8	-64.0	-67.6	-68.4	-67.4	-68.3	-69.2
58	-68.3	-68.0	-67.8	-69.0	-60.1	-58.9	-56.7	-54.4	-45.3	-58.9	-62.5	-66.7	-67.6	-66.5	-67.4	-68.5
59	-69.0	-68.8	-68.6	-69.7	-61.8	-60.8	-59.1	-56.3	-46.5	-56.9	-60.8	-65.7	-66.7	-65.4	-66.5	-67.6
61	-69.8	-69.6	-69.4	-70.4	-63.3	-62.5	-61.1	-58.6	-52.4	-54.7	-58.4	-64.5	-65.7	-64.1	-65.4	-66.6
62	-70.5	-70.3	-70.1	-71.1	-64.6	-63.9	-62.8	-60.5	-55.9	-53.5	-55.4	-63.3	-64.6	-62.9	-64.3	-65.5
63	-71.1	-70.9	-70.8	-71.7	-65.8	-65.2	-64.3	-62.2	-58.8	-54.0	-50.6	-61.8	-63.3	-61.4	-63.0	-64.3
64	-71.7	-71.5	-71.4	-72.2	-66.9	-66.3	-65.5	-63.7	-61.0	-56.1	-42.0	-60.1	-61.9	-59.6	-61.5	-62.9
65	-72.2	-72.1	-71.9	-72.7	-67.8	-67.3	-66.6	-64.9	-62.8	-58.3	-40.2	-58.1	-60.2	-57.5	-59.9	-61.3
66	-72.8	-72.6	-72.5	-73.2	-68.7	-68.2	-67.6	-66.1	-64.2	-60.3	-49.7	-55.9	-58.4	-55.4	-58.2	-59.3
67	-73.2	-73.1	-72.9	-73.6	-69.3	-68.9	-68.3	-67.0	-65.3	-61.6	-54.4	-54.4	-56.9	-54.2	-57.0	-57.6
68	-69.3	-69.0	-68.8	-69.9	-62.1	-61.2	-59.6	-56.5	-47.3	-56.8	-61.1	-65.8	-66.8	-65.6	-66.6	-67.8
69	-69.4	-69.2	-68.9	-70.0	-62.4	-61.4	-60.0	-56.9	-48.4	-56.5	-60.8	-65.6	-66.6	-65.4	-66.5	-67.6
70	-69.5	-69.3	-69.1	-70.1	-62.6	-61.7	-60.2	-57.2	-49.2	-56.2	-60.6	-65.5	-66.5	-65.3	-66.3	-67.5
71	-69.6	-69.4	-69.2	-70.2	-62.8	-61.9	-60.5	-57.5	-50.0	-55.9	-60.3	-65.3	-66.4	-65.1	-66.2	-67.4
72	-66.0	-65.7	-65.4	-67.0	-52.0	-48.9	-40.0	-54.2	-56.8	-63.4	-66.0	-68.9	-69.6	-68.8	-69.5	-70.4
84	-69.6	-69.3	-69.1	-70.2	-62.8	-61.9	-60.5	-57.5	-49.9	-56.0	-60.3	-65.3	-66.4	-65.1	-66.2	-67.4
85	-70.5	-70.3	-70.1	-71.1	-64.7	-64.0	-62.9	-60.3	-56.0	-53.8	-56.9	-63.7	-65.0	-63.4	-64.7	-66.0
88	-67.1	-67.4	-67.7	-67.1	-71.2	-71.5	-71.7	-72.8	-73.1	-73.9	-75.1	-75.8	-76.1	-76.2	-76.6	-76.8
89	-50.8	-52.5	-54.0	-44.8	-66.1	-66.6	-67.3	-68.9	-69.8	-71.6	-72.9	-74.2	-74.6	-74.2	-74.6	-75.1
90	-49.8	-51.9	-53.5	-45.9	-66.0	-66.5	-67.2	-68.8	-69.7	-71.5	-72.8	-74.2	-74.5	-74.2	-74.5	-75.1
91	-49.1	-51.5	-53.3	-47.4	-65.8	-66.4	-67.0	-68.7	-69.6	-71.4	-72.7	-74.1	-74.5	-74.1	-74.5	-75.0
92	-48.7	-51.3	-53.1	-48.9	-65.7	-66.3	-66.9	-68.6	-69.5	-71.3	-72.7	-74.0	-74.4	-74.1	-74.4	-75.0
93	-48.8	-51.3	-53.2	-50.4	-65.6	-66.2	-66.8	-68.6	-69.4	-71.2	-72.6	-73.9	-74.3	-74.0	-74.4	-74.9
94	-49.2	-51.6	-53.3	-51.7	-65.5	-66.1	-66.7	-68.5	-69.3	-71.1	-72.5	-73.9	-74.3	-73.9	-74.3	-74.9
95	-50.0	-52.1	-53.7	-52.9	-65.4	-66.0	-66.6	-68.4	-69.2	-71.0	-72.4	-73.8	-74.2	-73.9	-74.3	-74.8
96	-50.9	-52.7	-54.1	-54.0	-65.3	-65.9	-66.5	-68.3	-69.1	-70.9	-72.4	-73.7	-74.1	-73.8	-74.2	-74.7
97	-51.8	-53.3	-54.6	-54.9	-65.2	-65.8	-66.4	-68.3	-69.0	-70.8	-72.3	-73.7	-74.1	-73.8	-74.2	-74.7
98	-52.8	-54.1	-55.1	-55.8	-65.2	-65.7	-66.3	-68.2	-69.0	-70.7	-72.2	-73.6	-74.0	-73.7	-74.1	-74.6
99	-53.8	-54.8	-55.7	-56.5	-65.1	-65.6	-66.2	-68.1	-68.9	-70.7	-72.2	-73.5	-73.9	-73.7	-74.1	-74.6
100	-54.5	-55.3	-56.1	-57.3	-64.9	-65.5	-66.1	-68.0	-68.7	-70.5	-72.1	-73.4	-73.8	-73.6	-74.0	-74.5
101	-55.1	-55.9	-56.6	-57.9	-64.9	-65.4	-66.0	-67.9	-68.7	-70.4	-72.0	-73.3	-73.7	-73.5	-74.0	-74.5
115	-41.6	-46.4	-49.3	-49.5	-64.8	-65.4	-66.1	-68.0	-68.9	-70.8	-72.2	-73.6	-74.0	-73.7	-74.1	-74.6
116	-53.7	-52.5	-51.7	-57.4	-61.6	-62.4	-63.4	-65.9	-67.0	-69.4	-71.0	-72.6	-73.1	-72.7	-73.1	-73.7
117	-56.9	-56.1	-55.3	-59.6	-60.0	-61.0	-62.1	-64.9	-66.1	-68.8	-70.5	-72.2	-72.7	-72.2	-72.7	-73.3
118	-58.1	-57.4	-56.7	-60.5	-59.0	-60.1	-61.3	-64.4	-65.7	-68.4	-70.2	-72.0	-72.5	-72.0	-72.5	-73.1
123	-67.2	-67.5	-67.8	-66.3	-72.0	-72.2	-72.6	-73.5	-74.0	-75.2	-76.0	-77.0	-77.3	-77.0	-77.3	-77.7
124	-67.3	-67.6	-67.8	-66.4	-72.0	-72.3	-72.6	-73.5	-74.1	-75.2	-76.1	-77.0	-77.3	-77.0	-77.3	-77.7
135	-46.3	-48.3	-50.2	-52.8	-64.3	-64.9	-65.6	-67.6	-68.5	-70.4	-71.9	-73.4	-73.8	-73.5	-73.9	-74.4
136	-37.2	-41.5	-45.4	-50.6	-63.3	-64.0	-64.8	-67.0	-68.0	-70.6	-71.8	-73.5	-73.9	-73.2	-73.6	-74.3
137	-51.6	-51.2	-51.1	-56.3	-62.2	-63.0	-63.8	-66.2	-67.2	-69.5	-71.1	-72.7	-73.2	-72.8	-73.2	-73.8
138	-54.7	-53.3	-52.0	-57.8	-60.6	-61.5	-62.6	-65.3	-66.5	-69.1	-70.7	-72.4	-72.9	-72.4	-72.9	-73.5
139	-56.0	-55.3	-54.6	-59.0	-60.8	-61.7	-62.7	-65.4	-66.5	-69.0	-70.7	-72.3	-72.8	-72.4	-72.9	-73.5
140	-58.2	-57.2	-56.3	-60.2	-58.3	-59.6	-61.0	-64.0	-65.5	-68.5	-70.1	-72.0	-72.5	-71.9	-72.4	-73.1
141	-58.6	-57.9	-57.4	-60.9	-58.9	-60.0	-61.1	-64.3	-65.5	-68.2	-70.1	-71.9	-72.4	-71.9	-72.4	-73.0

Distance Correction, dB(A)

NSR No. WorkSite	20	21	22	23	24	25	26	27	28	29	30	31	32	33	34	35
142	-60.4	-59.7	-59.0	-62.0	-54.0	-56.0	-57.9	-62.1	-63.8	-67.3	-69.2	-71.2	-71.8	-71.2	-71.7	-72.4
143	-59.1	-59.9	-60.6	-57.6	-68.2	-68.6	-69.1	-70.5	-71.2	-72.7	-73.8	-75.0	-75.3	-75.1	-75.4	-75.9
144	-61.1	-61.8	-62.3	-60.1	-68.9	-69.3	-69.7	-71.0	-71.6	-73.0	-74.1	-75.2	-75.6	-75.4	-75.7	-76.1

APPENDIX – 6-3

Results of Construction Noise Assessment
(Unmitigated Scenario)

Project : KSL EIA
 Title : Noise Assessment for Launching Shaft during Daytime
 Date : 17-Mar-04

NSR : N10 - FSD Kowloon South Divisional HQ

Scenario : Unmitigated

PME	TM - Ref	SWL dB(A)	Qty	Util	Dist ^[2]			Correction, dB(A)					Subtotal dB(A)	
					H m	V m	S m	Qty	Util	Dist	Barr	Sil		Fac
<u>Scenario - Unmitigated</u>														
Gantry *	CNP049	95	1	100	76	12	77	0	0	-46	-5	0	3	47
Generator	CNP103	95	1	100	76	32	82	0	0	-46	0	0	3	52
Compressor	CNP002	102	1	100	76	32	82	0	0	-46	0	0	3	59
Conveyor Belt *	CNP041	90	1	100	76	12	77	0	0	-46	-10	0	3	37
Ventilation Fan *	CNP241	108	1	100	76	12	77	0	0	-46	0	-15	3	50
Water Pump (S/M)	CNP283	85	1	100	76	32	82	0	0	-46	0	0	3	42
Water Pump (for WWTP) *	CNP281	88	1	100	76	12	77	0	0	-46	-10	0	3	35
Diesel Train	[1]	108	1	100	76	32	82	0	0	-46	0	0	3	65
Mortar Car	[1]	108	1	100	76	32	82	0	0	-46	0	0	3	65
TBM	[1]	109	1	100	76	32	82	0	0	-46	0	0	3	66
Total Noise Level													70	
Criterion													75	
Exceedence													Nil	

Except above-ground plant marked with *, others are located at the bottom of the launching shaft.

[1] - SWLs of these plant items are extracted from CNP application ref GW-TN0374-03 dated Nov 2003 for LMC.

[2] - H refers to horizontal distance; V refers to vertical distance; S refers to slant distance.

Project : KSL EIA
 Title : Noise Assessment for Launching Shaft during Daytime
 Date : 17-Mar-04

NSR : N12 - Lai Chak Middle School

Scenario : Unmitigated

PME	TM - Ref	SWL dB(A)	Qty	Util	Dist ^[2]			Correction, dB(A)					Subtotal dB(A)	
					H m	V m	S m	Qty	Util	Dist	Barr	Sil		Fac
<i>Scenario - Unmitigated</i>														
Gantry *	CNP049	95	1	100	105	0	105	0	0	-48	-5	0	3	45
Generator	CNP103	95	1	100	105	20	107	0	0	-49	0	0	3	49
Compressor	CNP002	102	1	100	105	20	107	0	0	-49	0	0	3	56
Conveyor Belt *	CNP041	90	1	100	105	0	105	0	0	-48	-10	0	3	35
Ventilation Fan *	CNP241	108	1	100	105	0	105	0	0	-48	0	-15	3	48
Water Pump (S/M)	CNP283	85	1	100	105	20	107	0	0	-49	0	0	3	39
Water Pump (for WWTP) *	CNP281	88	1	100	105	0	105	0	0	-48	-10	0	3	33
Diesel Train	[1]	108	1	100	105	20	107	0	0	-49	-5	0	3	57
Mortar Car	[1]	108	1	100	105	20	107	0	0	-49	-5	0	3	57
TBM	[1]	109	1	100	105	20	107	0	0	-49	-5	0	3	58
												Total Noise Level	64	
												Criterion	70	
												Exceedence	Nil	

Except above-ground plant marked with *, others are located at the bottom of the launching shaft.

[1] - SWLs of these plant items are extracted from CNP application ref GW-TN0374-03 dated Nov 2003 for LMC.

[2] - H refers to horizontal distance; V refers to vertical distance; S refers to slant distance.

Project : KSL EIA
 Title : Noise Assessment for Launching Shaft during Daytime
 Date : 17-Mar-04

NSR : N13 - Victoria Tower

Scenario : Unmitigated

PME	TM - Ref	SWL dB(A)	Qty	Util	Dist ^[2]			Correction, dB(A)					Subtotal dB(A)	
					H m	V m	S m	Qty	Util	Dist	Barr	Sil		Fac
<u>Scenario - Unmitigated</u>														
Gantry *	CNP049	95	1	10	74	12	75	0	-10	-45	-5	0	3	38
Generator	CNP103	95	1	100	74	32	81	0	0	-46	0	0	3	52
Compressor	CNP002	102	1	100	74	32	81	0	0	-46	0	0	3	59
Conveyor Belt *	CNP041	90	1	100	74	12	75	0	0	-45	-10	0	3	38
Ventilation Fan *	CNP241	108	1	100	74	12	75	0	0	-45	0	-15	3	51
Water Pump (S/M)	CNP283	85	1	100	74	32	81	0	0	-46	0	0	3	42
Water Pump (for WWTP) *	CNP281	88	1	100	74	12	75	0	0	-45	-10	0	3	36
Diesel Train	[1]	108	1	50	74	32	81	0	-3	-46	0	0	3	62
Mortar Car	[1]	108	1	50	74	32	81	0	-3	-46	0	0	3	62
TBM	[1]	109	1	100	74	32	81	0	0	-46	0	0	3	66
Total Noise Level													69	
Criterion													75	
Exceedence													Nil	

Except above-ground plant marked with *, others are located at the bottom of the launching shaft.

[1] - SWLs of these plant items are extracted from CNP application ref GW-TN0374-03 dated Nov 2003 for LMC.

[2] - H refers to horizontal distance; V refers to vertical distance; S refers to slant distance.

Project: KSL GSA-5100 EIA & Associated Services
 Title: Construction Noise Level, Leq(30 min) with Contribution from Launching Shaft
 Option: Unmitigated

NSR	Building Description	2005												2006												2007												Max Noise Level, Leq	TM-EIA Criteria	Duration Exceed Criteria					
		Jan	Feb	Mar	Apr	May	Jun	Jul	Aug	Sep	Oct	Nov	Dec	Jan	Feb	Mar	Apr	May	Jun	Jul	Aug	Sep	Oct	Nov	Dec	Jan	Feb	Mar	Apr	May	Jun	Jul	Aug	Sep	Oct	Nov	Dec								
		1	2	3	4	5	6	7	8	9	10	11	12	13	14	15	16	17	18	19	20	21	22	23	24	25	26	27	28	29	30	31	32	33	34	35	36								
N1	Hong Kong Space Museum	0	0	77	77	77	82	82	82	82	82	82	76	76	76	76	76	76	76	76	76	76	76	78	78	78	78	78	78	78	78	78	78	78	78	78	78	78	78	82	70	33			
N2	Hong Kong Cultural Centre	0	0	74	74	74	79	79	79	79	79	79	79	79	79	73	73	73	73	73	73	73	73	75	75	75	75	75	75	75	75	75	75	75	75	75	75	75	75	75	75	79	70	33	
N3	Hankwo Centre	0	0	67	67	67	72	72	72	72	72	72	72	72	72	66	66	66	66	66	66	66	66	69	69	69	69	69	69	69	69	69	69	69	69	69	69	69	69	69	69	72	75	0	
N6	No.4-8 Canton Road	0	0	76	76	76	78	78	78	79	79	79	86	86	86	71	71	71	71	71	71	71	71	72	74	74	74	73	73	73	73	76	80	78	77	77	0	0	0	0	0	86	75	15	
N7	Imperial Building (facing Canton Road)	0	0	65	65	65	65	71	71	72	72	72	76	77	82	82	75	75	70	58	58	58	58	62	62	60	56	56	58	63	61	59	59	71	71	71	0	0	0	0	81	75	6		
N8	No.82-84 Canton Road (facing Canton Road)	0	0	69	69	69	76	76	81	81	80	80	72	72	69	69	69	56	56	56	56	62	62	60	56	56	58	63	61	59	59	71	71	71	0	0	0	0	0	86	75	6			
N9	Manley (facing Canton Road)	0	0	71	71	71	71	79	79	86	86	86	78	79	70	70	68	68	70	0	0	61	61	61	0	0	0	0	0	0	0	0	0	0	0	0	0	0	0	0	85	75	15		
N10	Fire Service Department Kowloon South Divisional HQ	0	0	60	68	68	75	79	79	85	85	81	81	76	76	77	77	76	75	71	71	71	71	73	73	70	70	70	73	73	69	69	69	70	70	70	58	58	58	86	70	19			
N11	Canton Road Government School	58	58	63	67	67	72	75	75	78	78	86	86	86	77	77	76	75	71	71	71	73	73	70	70	70	73	73	69	69	69	70	70	70	58	58	58	86	70	19					
N12	Lai Chack Middle School	58	58	63	67	67	72	75	75	78	78	86	86	86	77	77	76	75	71	71	71	73	73	70	70	70	73	73	69	69	69	70	70	70	58	58	58	86	75	15					
N13	Victoria Tower	58	58	62	68	68	75	77	77	78	78	77	77	76	76	77	77	74	74	74	76	76	73	73	73	77	77	73	73	73	73	71	71	71	0	0	0	81	75	28					
N14	No.1-3A Austin Road, Wai On Building	0	0	0	73	73	76	76	78	78	78	79	79	79	79	81	81	81	77	77	77	78	77	76	76	76	78	78	76	76	76	76	76	76	76	76	76	76	76	81	75	0			
N15	The Harbour Side	59	59	59	59	59	59	59	59	59	59	59	59	59	59	59	59	59	59	59	59	59	59	59	59	59	59	59	59	59	59	59	59	59	59	59	59	59	59	59	76	75	3		
N16	The Waterfront	70	70	70	74	71	71	72	74	74	74	75	74	75	75	76	76	75	74	74	73	73	74	74	74	73	71	71	71	71	71	71	71	71	71	71	67	67	67	76	75	19			
N17	Sorrento	76	76	76	77	71	72	72	77	77	77	78	78	74	75	75	77	77	77	77	76	76	76	76	76	76	76	76	76	76	76	76	76	76	76	76	76	76	76	76	76	80	75	26	
N18	No.51 Jordan Road, Lee Kiu Building	69	69	69	75	73	74	75	78	78	78	79	79	79	79	80	80	80	77	78	77	77	78	77	78	76	76	76	76	76	76	76	76	76	76	76	76	76	76	76	76	80	75	20	
N19	Man King Building	75	75	75	80	79	85	85	86	86	88	88	88	87	87	87	88	87	84	84	84	84	84	84	84	82	82	82	82	82	82	81	81	80	80	80	80	80	80	80	80	86	75	36	
N20	Man Fat Building	80	80	80	85	80	82	81	82	82	81	83	83	84	83	84	83	84	84	86	83	84	84	84	84	82	82	82	82	82	82	81	81	80	80	80	80	80	80	80	80	83	75	24	
N21	Man Yiu Building	75	75	75	80	74	77	76	77	77	78	79	78	81	80	82	81	81	82	83	82	82	80	80	82	82	80	77	77	74	74	74	74	74	74	74	74	74	74	74	74	82	75	22	
N22	Man Cheong Building	74	74	74	78	74	75	75	76	76	77	78	78	79	79	80	80	80	77	78	77	78	77	78	77	76	76	76	76	76	76	76	76	76	76	76	76	76	76	76	76	80	75	17	
N23	Man Wah Building	70	70	70	78	74	75	77	79	79	78	79	79	79	79	80	80	80	77	78	77	78	77	78	77	76	76	76	76	76	76	76	76	76	76	76	76	76	76	76	76	76	80	75	15
N24	Yau Ma Tei Catholic Primary School	66	66	66	66	66	66	66	66	66	66	66	66	66	66	66	66	66	66	66	66	66	66	66	66	66	66	66	66	66	66	66	66	66	66	66	66	66	66	66	66	78	70	17	
N25	HKMA David Li Kwok Po Collage	0	0	0	0	80	80	80	86	86	89	89	89	89	89	89	89	89	89	89	89	89	89	89	89	89	89	89	89	89	89	89	89	89	89	89	89	89	89	89	89	84	75	15	
N26	Charming Garden	0	0	0	0	66	66	70	70	70	73	75	77	77	77	78	78	78	78	78	78	78	78	78	78	78	78	78	78	78	78	78	78	78	78	78	78	78	78	78	78	84	75	0	
N27	Park Avenue	0	0	0	0	65	65	70	70	70	71	73	74	74	74	74	74	74	74	74	74	74	74	74	74	74	74	74	74	74	74	74	74	74	74	74	74	74	74	74	74	84	75	21	
N28	Central Park	0	0	0	0	78	78	80	80	80	79	83	83	83	83	84	84	84	84	84	84	84	84	84	84	84	84	84	84	84	84	84	84	84	84	84	84	84	84	84	84	77	75	7	
N29	Island Harbourview	0	0	0	0	73	73	74	74	74	74	77	76	75	75	76	76	76	76	76	76	76	76	75	75	74	74	74	74	74	74	74	74	74	74	74	74	74	74	74	74	84	75	15	
N30	Olympic Station Phase 3 Project and Olympian City Phase	0	0	0	0	73	73	80	80	80	83	84	83	82	81	80	82	82	82	79	79	79	71	61	61	61	55	58	58	0	0	0	0	0	0	0	0	0	0	0	71	70	2		
N31	Tai Kok Tsui Catholic Primary School (Hoi Fan Road)	0	0	0	0	67	67	70	70	70	70	71	71	64	64	64	65	64	61	61	61	61	61	61	61	61	61	61	61	61	61	61	61	61	61	61	61	61	61	61	61	69	70	0	
N32	Sir Ellis Kadoorie Secondary School (West Kwloon)	0	0	0	0	65	65	68	68	68	68	68	68	68	68	62	63	62	59	59	59	54	57	57	0	0	0	0	0	0	0	0	0	0	0	0	0	0	0	0	0	71	75	0	
N33	West Kowloon Disciplined Services Quarters	0	0	0	0	67	67	71	71	71	71	71	71	65	65	64	65	65	62	62	62	56	59	59	0	0	0	0	0	0	0	0	0	0	0	0	0	0	0	0	0	0	69	75	0
N34	Metro Harbourview (Under construction)	0	0	0	0	65	65	68	68	68	68	68	68	68	68	63	63	62	60	60	60	54	57	57	0	0	0	0	0	0	0	0	0	0	0	0	0	0	0	0	0	0	68	75	0
N35	Nam Cheong Estate	0	0	0	0	64	64	67	67	67	67	68	68	68	68	61	61	62	61	58	58	58	53	56	56	0	0	0	0	0	0	0	0	0	0	0	0	0	0	0	0	68	75	0	

Project : KSL EIA
 Title : Noise level at N15 due to haul road
 Date : 17-May-04

NSR : N15 - The Harbour Side

PME	TM - Ref	SWL dB(A)	Qty	Speed km/h	Dist ^[1]			Correction, dB(A)					Subtotal ^[2] dB(A)
					H m	V m	S m	Qty	Speed	Dist	Barr	Fac	
Dump Truck	BS Table C9 Ref 24	104	43	15	180	25	182	16.3	-12	-23	0	3	56
Total Noise Level												56	
Criterion												75	
Exceedence												Nil	

[1] - H refers to horizontal distance; V refers to vertical distance; S refers to slant distance.

[2] - For haul road calculation, $L_{Aeq} = L_{WA} - 33 + 10 \log Q - 10 \log V - 10 \log d$

where L_{WA} is the sound power level of the plant;

Q is the number of vehicles per 30 mins;

V is the average vehicle speed in km/h and

d is the distance of receiving position from the centre of haul road (in m)

APPENDIX – 6-4

Summary of Mitigation Measures
and Associated Noise Reduction

Barrier Correction for different PME's under Mitigated Scenario

Equipment	Recommended Mitigation Measure			Correction dB(A)
	Enclosure	Movable Barrier	Acoustic Mat	
Air Compressor	✓			-10
Asphalt Paver				
Auger			✓	-5
Bentonite filtering and mixing plant	✓			-5
Breaker handheld		✓		-5
Chisel			✓	-5
Circular Saw		✓		-5
Concrete Lorry Mixer				
Concrete Pump Truck				
Conveyor belt				
Crane Lorry				
Crawler Crane				
Crawler Drill		✓		-5
Derrick barge				
Down the Hole Rig (Electric)			✓	-5
Drill Hole Machine (Electric)		✓		-5
Electric Grout Pump	✓			-10
Excavator				
Filtering Plant / Desander	✓			-10
Generator, silenced	✓			-10
Grout Mixer (Electric)	✓			-10
Hydraulic Breaker				
Hydraulic Excavator				
Lorry				
Mini Excavator				
Mobile Crane				
Piling, Crawler crane/chisel/oscillator/RCD			✓	-5
Pipe Pile Rigs			✓	-5
Pokers				
Roller				
Ventilation Fan				
Water Pump	✓			-10

APPENDIX – 6-5

Sound Power Levels of Quiet Plant

Sound Power Levels for Quiet Plants

Equipment	Power rating/size, weight	BS 5228 Part 1 Identification	SWL
Asphalt Paver	90kW, 13t	BS Table C8 REF 24	101
Circular Saw	660mm blade	BS Table C7 REF 78	106
Crane Lorry	4kW	BS Table C7 REF 101	94
Crawler Crane	58kW, 34t	BS Table C7 REF 112	102
Excavator	45kW	BS Table C3 REF 35	106
Hydraulic Breaker	73kW, 200kg	BS Table C8 REF 13	110
Hydraulic Excavator	45kW	BS Table C3 REF 35	106
Lorry	20t	BS Table C9 REF 19	102
Mobile Crane	58kW, 34t	BS Table C7 REF 112	102
Pipe Pile Rigs	75kW	BS Table C4 REF 44	109
Pokers	0.75 each poker	BS Table C6 REF 40	98
Roller	51kW	BS Table C8 REF 30	101
Water Pump	electric	CNP 281	88